

**BYLAW NO. 78-04**  
**THE MUNICIPAL DISTRICT OF CLEAR HILLS NO. 21**  
**A BYLAW TO ENACT THE**  
**CLEARHILLS CROSSROAD INDUSTRIAL PARK AREA STRUCTURE PLAN**

WHEREAS Section 633 of the Municipal Government Act, Chapter M-26 empowers Council to adopt Area Structure Plans, which provide a framework for the subdivision and development of areas of land within the Municipal District of Clear Hills No. 21; and

WHEREAS the Council of the Municipal District of Clear Hills No. 21 has deemed it necessary to adopt the Clearhills Crossroad Industrial Area Structure Plan within the municipality;

WHEREAS the Council of the Municipal District of Clear Hills No. 21 has held a public hearing pursuant to Section 230 of the Municipal Government Act;


NOW THEREFORE, the Council of the Municipal District of Clear Hills No. 21, duly assembled, hereby enacts as the following:

1. That this Bylaw shall be known as the Clearhills Crossroad Industrial Park Area Structure Plan Bylaw.
2. That the Clearhills Crossroad Industrial Park Area Structure Plan shall provide the framework and policies for any future development of the lands described therein.
3. That Bylaw No. 78-04 shall take effect on the date of its final passage by Council.

First Reading given on the 9<sup>th</sup> day of November, 2004.

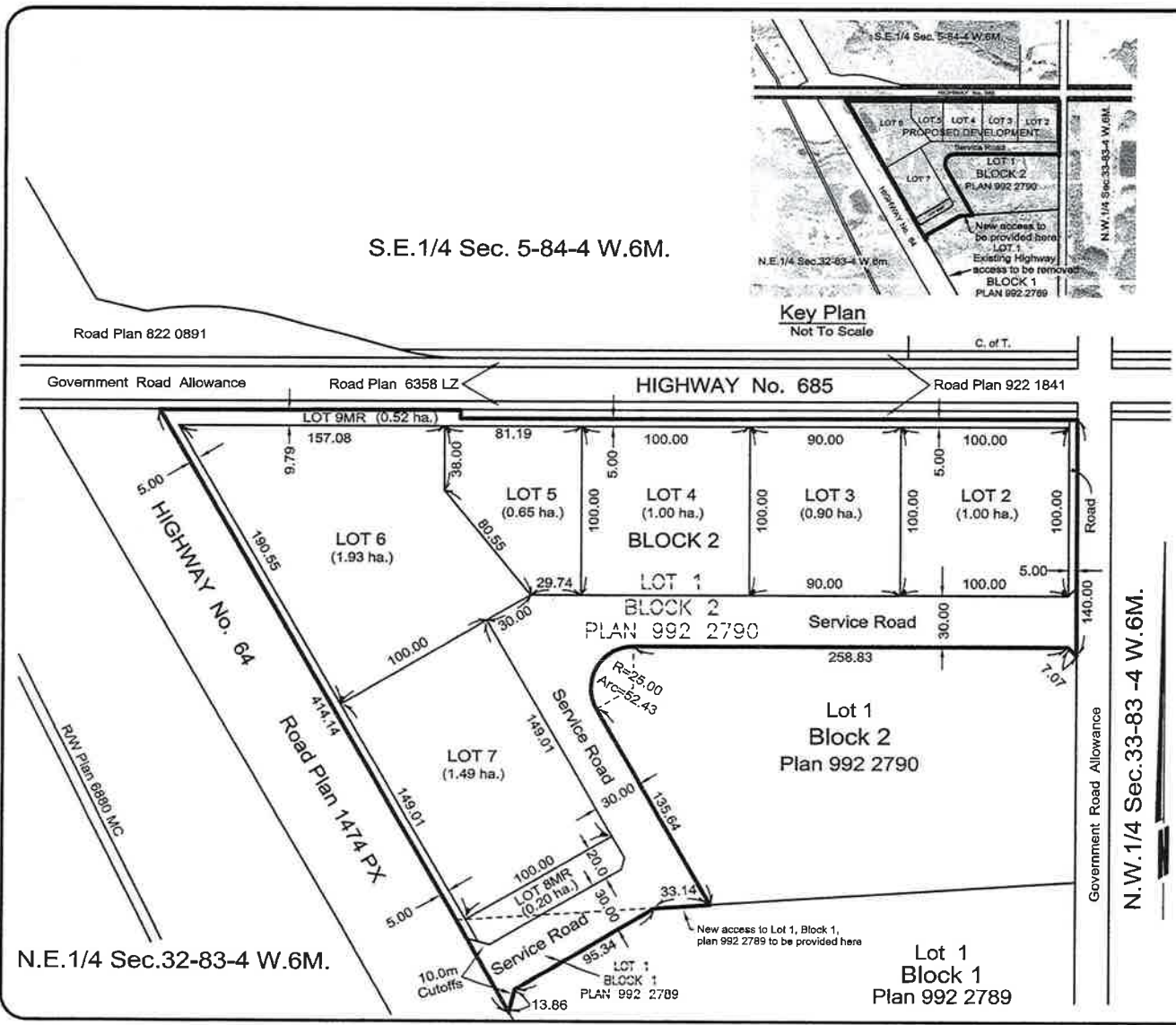
Second Reading given on the 9<sup>th</sup> day of November, 2004.

Third Reading and Assent given on the 9<sup>th</sup> day of November, 2004.

  
\_\_\_\_\_  
Mae Allen, Reeve

  
\_\_\_\_\_  
Bill Kostiw, Chief Administrative Officer

273  
274



**Tentative Plan Showing  
Proposed Subdivision of**

**Lot 1, Block 2, Plan 992 2790  
And Part of  
Lot 1, Block 1, Plan 992 2789**  
(Within N.E.1/4 Sec.32, Twp.83, Rge.4, W.6M.)  
in M.D. of Clear Hills No.21, Alberta

**Legend**

All Measurements are expressed in metres and decimals thereof.  
Area to be subdivided shown outlined thus  
Corner cutoffs are 5.0 x 5.0 unless otherwise shown.

Containing Within: Lot 1, Block 2, Plan 992 2790 - 9.40 ha.  
Lot 1, Block 1, Plan 992 2789 - 0.28 ha.  
**TOTAL - 9.68 ha.**

ha. . . . . Hectare  
SEC. . . . . Section  
TWP. . . . . Township  
RGE. . . . . Range  
W.6M. . . . . West of the 6th Meridian  
C. of T. . . . . Certificate of Title  
R/W . . . . . Right of Way  
Arc= . . . . . Arc Length  
R= . . . . . Radius  
N.W.1/4 . . . . . Northwest Quarter  
N.E.1/4 . . . . . Northeast Quarter  
S.E.1/4 . . . . . Southeast Quarter

Aerial Photo Copyright Air Photo Services, Alberta Environment  
(Photo Information 97-159, dated 97/09/01, scale: 1:30,000,  
LN 9 W, AS4891-226.)

10401-77th Street, Peace River, Alberta, T8S 1R2  
Phone: [780] 624-1800  
Fax: [780] 624-1078  
peacriver@midwestsurveys.com

Drawn by: DJM	Job No.: P-0077-04
Checked by: ROM	
Date: Oct. 14, 2004	Scale - 1:3000
	Dwg. No.: P007704TP4