

BYLAW NO. 157-11

A BYLAW OF CLEAR HILLS COUNTY, IN THE PROVINCE OF ALBERTA FOR THE PURPOSE OF AMENDING CLEAR HILLS COUNTY BYLAW NO. 107-08.

WHEREAS Pursuant to the Municipal Government Act, Revised Statutes of Alberta 2000, Chapter M-26, Council may amend a Land Use Bylaw, and;

WHEREAS Pursuant to Sections 230, 606 and 692 of the Province of Alberta Municipal Government Act, a Council may amend a Land Use Bylaw, and

WHEREAS The Council of Clear Hills County, in the Province of Alberta, has adopted Clear Hills County Land Use Bylaw No. 107-08, as amended, and;

WHEREAS The Council of Clear Hills County, in the Province of Alberta, deems it necessary to amend Clear Hills County Land Use Bylaw No. 107-08, as amended, to permit commercial uses in the Hamlet of Worsley - Clear Hills County, and;

WHEREAS The Council of Clear Hills county, in the Province of Alberta, has held the required Public Hearing under the Province of Alberta Municipal Government Act,

NOW
THEREFORE The Council of Clear Hills County, in the Province of Alberta, IN COUNCIL DULY ASSEMBLED, ENACTS AS FOLLOWS:

- 1. That lands known as Pt. NW Sec. 36 Twp. 86 Range 8 W6M & Lot 1, Block 7, Plan No. 102 0115 on Schedule C: Hamlet of Worsley in Clear Hills County be rezoned from Hamlet General District (H-G), Hamlet Industrial District (H-M) & Hamlet Residential District 2 (H-R2) to Hamlet Commercial District (H-C) as shown in the attached Schedule "A";**
- 2. That this bylaw shall take force and effect on the date of its final passage.**

First reading given on the 11th day of October, 2011.

Miron Croy, Reeve

Allen Rowe, Chief Administrative Officer

Second Reading given on the _____ day of _____, 2011.

Miron Croy, Reeve

Allen Rowe, Chief Administrative Officer

Third Reading and Assent given on the _____ day of _____, 2011.

Miron Croy, Reeve

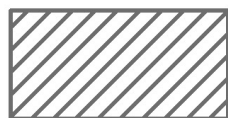
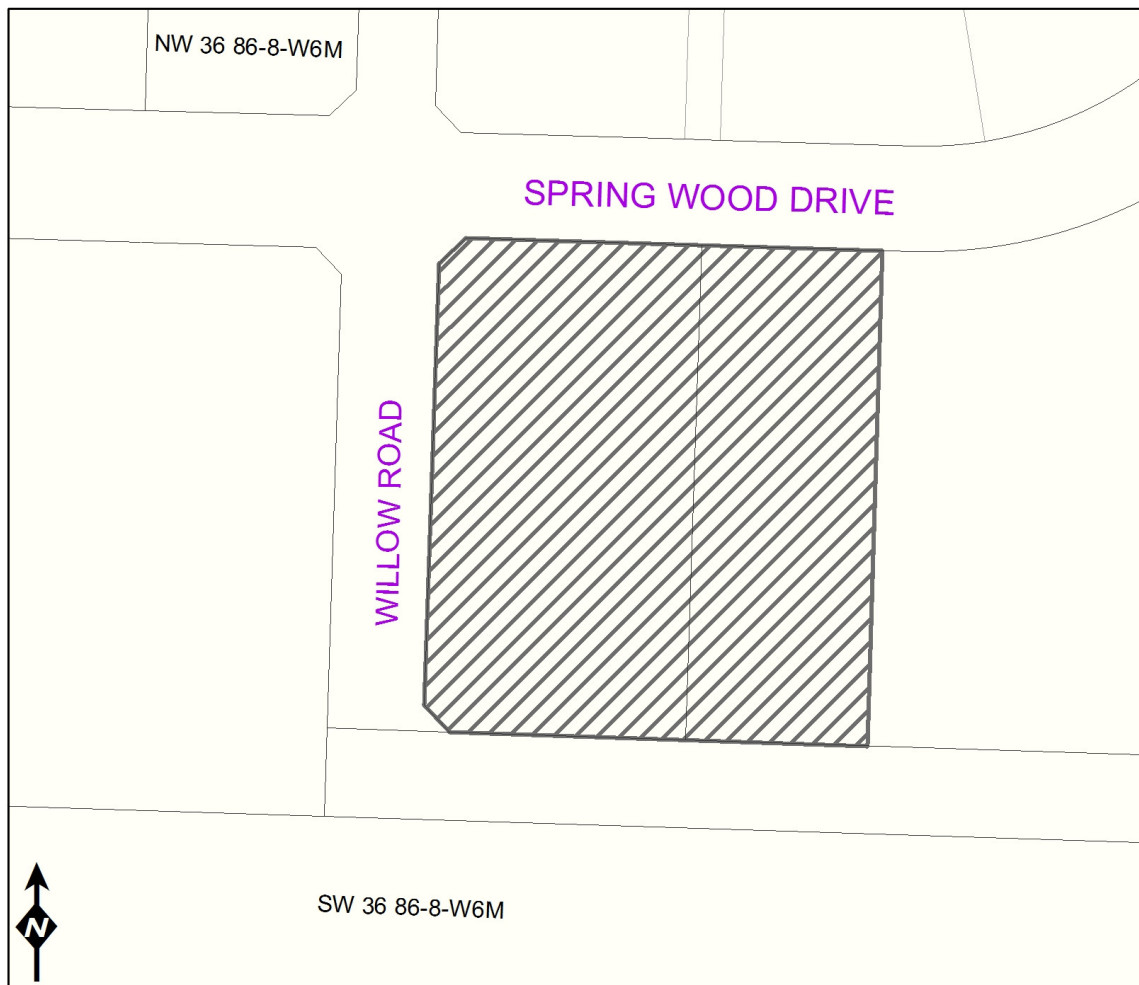
Allen Rowe, Chief Administrative Officer

**CLEAR HILLS COUNTY
BYLAW No. 157-11**

SCHEDULE "A"

1. That the following property in Clear Hills County:

That lands known as Pt. NW Sec. 36 Twp. 86 Range 8 W6M & Pt. Lot 1, Block 7, Plan No. 102 0115 in the Hamlet of Worsley in Clear Hills County be rezoned from Hamlet General District (H-G), Hamlet Industrial District (H-M) & Hamlet Residential District 2 (H-R2) to Hamlet Commercial District (H-C) **as shown;**



Area changing from: Hamlet General District(H-G),
Hamlet Industrial District (H-M), and
Hamlet Residential District 2 (HR-2)

to: Hamlet Commercial District (HC)

Miron Croy, Reeve

Allan Rowe, Chief Administrative Officer

EFFECTIVE THIS DAY _____ OF _____, 2011